

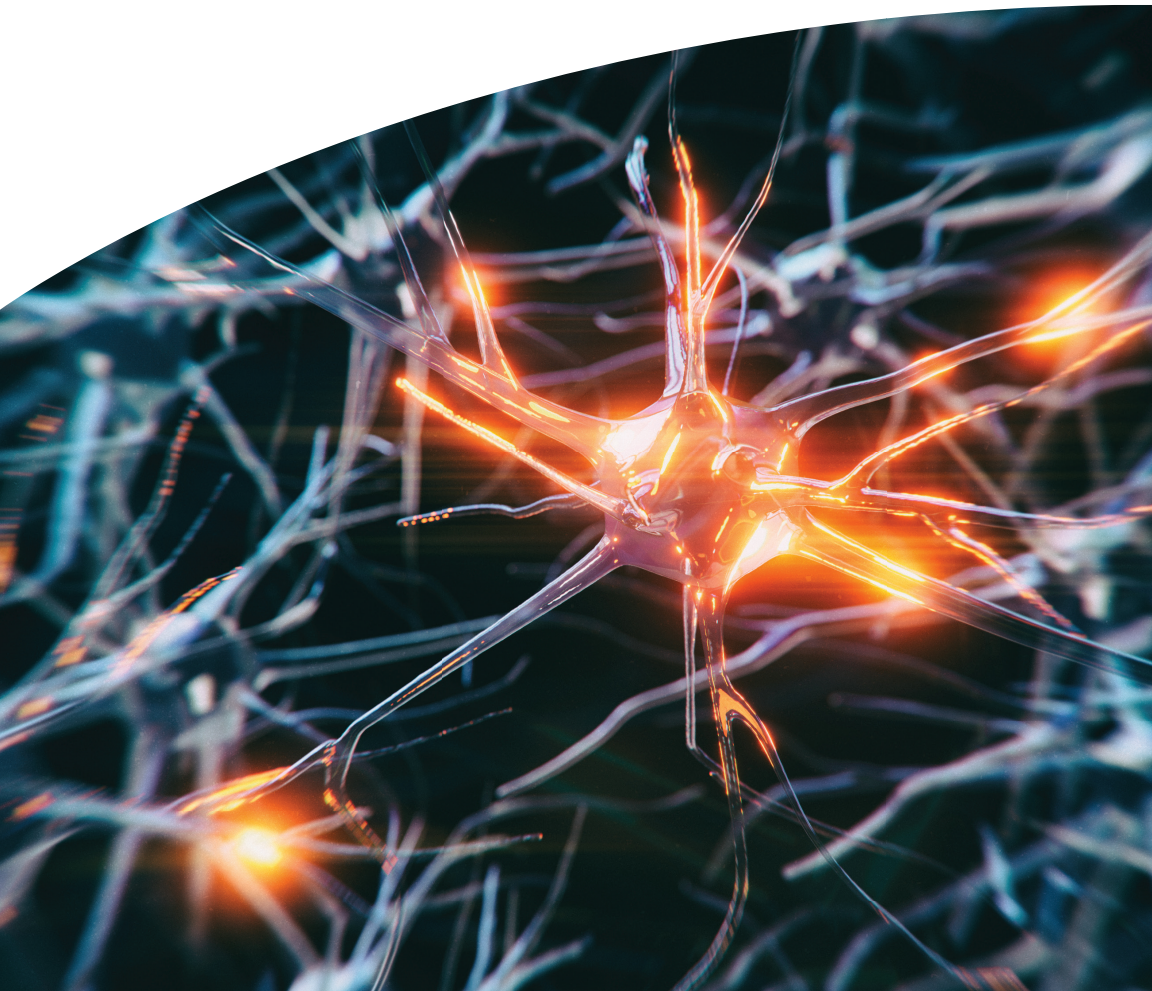


Continuing Medical Education

Parkinson's Disease Update

Friday, May 3, 2024

Presented at Virginia Mason Medical Center, Seattle,
and online via livestream



Faculty

COURSE DIRECTORS

Farrokh R. Farrokhi, MD

Chair of Functional Neurosurgery
Medical Director of Quality
Virginia Mason Franciscan Health
Seattle, Wash.

Maria T. Marsans, PA-C, MCMS

Neurosurgery
Program Director, DBS Program
Virginia Mason Franciscan Health
Seattle, Wash.

GUEST FACULTY

Pinky Agarwal, MD, FAAN

Neurology
Booth Gardner Parkinson's Care Center,
Evergreen Health
Kirkland, Wash.

Raima Amin, MD

Clinical Assistant Professor of Neurology
University of Washington
Seattle, Wash.

Amir Besharat, DO

Neurology
Swedish Neuroscience Specialists –
Movement Disorders
Seattle, Wash.

Jonathan D. Carlson, MD, PhD

Neurology
Providence Neurosurgery and Spine
Spokane, Wash.

Marie Y. Davis, MD, PhD

Neurology
Assistant Professor of Neurology,
UW Medical Center and VA Puget Sound
Seattle, Wash.

Amie L. Hiller, MD

Director of NW Veterans Affairs PADRECC
Associate Professor of Neurology,
School of Medicine
Oregon Health and Sciences University
Portland, Ore.

Shu-Ching Hu, MD, PhD

Neurology
Assistant Professor of Neurology,
UW Medical Center and Harborview
Medical Center
Seattle, Wash.

Pravin Khemani, MD, FAAN

Neurology
Medical Director, Movement Disorders
Program, Swedish Neuroscience Institute
Seattle, Wash.

Rajeev Ojha, MD

Neurology
Tribhuvan University Teaching Hospital
Maharajgunj, Kathmandu, Nepal

Susie I. Ro, MD

Neurology
Puget Sound Neurology
Tacoma, Wash.

Continuing Medical Education

Parkinson's Disease Update

The Parkinson's Disease Update is a half-day course designed to support primary care physicians, general neurologists, and advanced practitioners in the care of these patients. Our focus on Parkinson's Disease (PD) management will cover genetics in PD; standard and novel treatments of PD to include medical, surgical, and alternative medications; as well as the timing of referral to a movement disorder specialist or for surgical treatment. The course will conclude with talks on palliative care and the psychological stress incurred by Parkinson's and Huntington's Disease, and measures for maximizing the patient's quality of life.

Teaching methods include lecture, Q&A with faculty, and panel discussion.

TARGET AUDIENCE:

This course is appropriate for primary care and specialty clinicians. This course will also be of interest to advanced practice providers.

OBJECTIVES:

- Specify genetic variants that contribute to the risk of developing Parkinson's Disease (PD), and related movement disorders in Nepalese population
- Review the gene mutations linked to Parkinson's and considerations for genetic testing
- Discuss emerging diagnostic tools for Parkinson's Disease
- Summarize broad categories of clinical trials in Parkinson's Disease
- Identify common non-motor symptoms of Parkinson's Disease
- Discuss the supplements and lifestyle modifications offered to PD patients
- Recognize the diversity in Parkinson's disease presentation, symptomatology, and clinical outcomes in patients from diverse racial and ethnic backgrounds
- Identify classes of medications that should not be used in late-stage Parkinson's disease
- Review the physiology and pharmacology behind current available treatment options in people with Parkinson's Disease
- Summarize the available surgical treatments for PD and when they should be considered

Agenda

- 7:00 a.m.** *Registration opens, complimentary coffee*
- 7:30 a.m.** **GRAND ROUNDS PRESENTATION:**
Genotype vs. Phenotype of Parkinson's Disease | Rajeev Ojha, MD
- 8:30 a.m.** *Break*
- 8:45 a.m.** **Opening Remarks** | Farrokh Farrokhi, MD & Maria Marsans, PA-C
- 9:00 a.m.** **Genetics of Parkinson's Disease** | Marie Davis, MD
- 9:20 a.m.** **Emerging Diagnostics and Therapeutics for Parkinson Disease**
Shu-Ching Hu, MD
- 9:40 a.m.** **Clinical Trial Update in Parkinson's Disease** | Pinky Agarwal, MD
- 10:00 a.m.** **Non-Motor Symptoms of Parkinson's Disease** | Pravin Khemani, MD
- 10:20 a.m.** *Break*
- 10:30 a.m.** **Classic and Complementary Treatments in Parkinson's Disease**
Amir Besharat, MD
- 10:50 a.m.** **Diversity in Parkinson's Disease** | Raima Amin, MD
- 11:10 a.m.** **Palliative Care and Psychologic Stress in Parkinson's Disease and Huntington's Disease** | Amie Hiller, MD
- 11:30 a.m.** **Things to Avoid in the Medical Treatment of People with Parkinson's Disease** | Susie Ro, MD
- 11:50 a.m.** **Surgical Treatments for Parkinson's Disease** | Jonathan Carlson MD
- 12:10 p.m.** **Panel**
- 12:30 p.m.** **Closing Remarks/Adjourn**



Virginia Mason Medical Center is accredited by the Accreditation Council for Continuing Medical Education (ACCME) to provide continuing medical education for physicians.

CREDIT DESIGNATION: Virginia Mason Medical Center designates this live activity for a maximum of **4.25 AMA PRA Category 1 Credits™**. Physicians should claim only the credit commensurate with the extent of their participation in the activity.

AAFP: Application for CME credit has been filed with the American Academy of Family Physicians (AAFP). Determination of credit is pending.

ABIM MOC: Successful completion of this CME activity, which includes participation in the evaluation component, enables the participant to earn up to 4.25 MOC points in the American Board of Internal Medicine's (ABIM) Maintenance of Certification (MOC) program. Participants will earn MOC points equivalent to the amount of CME credits claimed for the activity. It is the CME activity provider's responsibility to submit participant completion information to ACCME for the purpose of granting ABIM MOC credit.

LOCATION: This course will be held in Volney Richmond Auditorium on Level One of the Virginia Mason Lindeman Pavilion, 1201 Terry Avenue, Seattle (between Seneca & University Streets.) Please note the Terry Street entrance into Lindeman Pavilion is Level Two.



This course will also be livestreamed.

Registration

To register, complete the form below and send via:



Mail:

Virginia Mason CME Dept.
1100 Ninth Ave, D3-CME
Seattle, WA 98101



Phone: 206-341-0142



Fax: 206-341-1480



E-mail: cme@virginiamason.org

Web: VirginiaMasonCME.org

Cancellation and Refund Policy: Refunds will be made for a fee of \$25 if written notice of cancellation is received at least 14 calendar days prior to the activity.

Continuing Medical Education

Parkinson's Disease Update

Friday, May 3, 2024

Please print clearly

NAME: _____ DEGREE / CREDENTIALS: _____

SPECIALTY: _____

ORGANIZATION: _____

ADDRESS: _____

CITY / STATE / ZIP: _____

PHONE: _____ E-MAIL: _____

Please provide one question for the faculty: _____

TUITION: \$135 – I will attend in person (includes lunch)

\$110 – I will attend the livestream

Check enclosed. Make check payable to VMCC – CME

Please charge my: VISA MasterCard American Express Discover

CARD NUMBER: _____ EXP: _____

CARDHOLDER NAME: _____

SIGNATURE: _____

Please add me to your e-mail list for news of upcoming CME courses.



Virginia Mason
Franciscan Health™